

Shirt Measurement

1. Collar

Measure from middle of the button hole to the centre of the collar button.

inch.



2. Shoulder Width

Measure between sleeves seam from one side to other side.

inch.



3. Sleeve Length (Upper)

Measure from shoulder end seam to the end of the cuff.

inch.



4. Sleeve Width

Measure across the sleeve where it meets the shirt body. Straighten the seam.

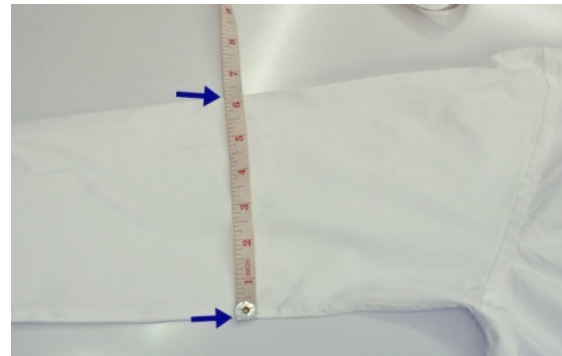
inch.



5.Short Sleeve opening

This measurement is taken across the flat sort sleeve at the end of the cuff.

inch.



6.Long Sleeve (Lower)

Measure from armpit seam to the end of the cuff.

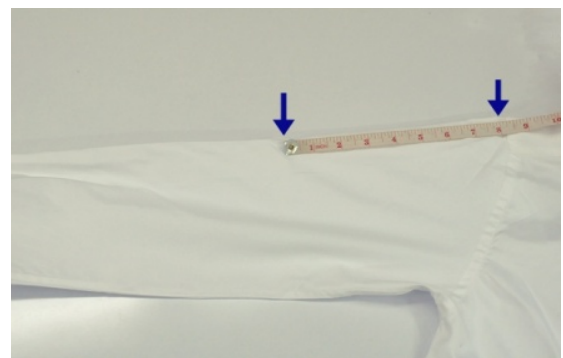
inch.



7.Short Sleeve (Upper)

Measurement is taken from the top of the shoulder where the sleeve meets the body to the end of the sleeve.

inch.



8.Short Sleeve (Lower Length)

Measurement is taken from the arepit seam to the end of the sleeve.

inch.



9.Cuff

Measure across the open cuff,from the outer edge of the button hole to the center of the button.

inch.



10.Chest

Measure from Left seam to right seam, as follow the picture.

inch.



11.Waist

Measure across the shirt at the narrowest part of the waist.

inch.



12.Bottom

Measure across the shirt at the end of the side seams.

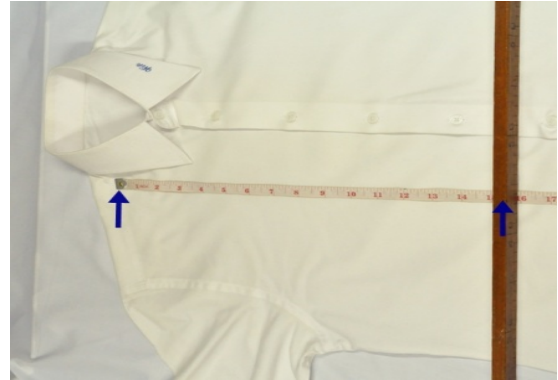
inch.



13.Length to waist

Measure from a point straight out from center of the neck opening down to where you took the waist measurement.

inch.



14.Front Length

Measure from a point straight out from the center of the neck opening down to where your shirt ends.

inch.

